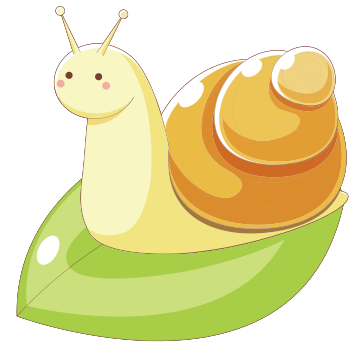
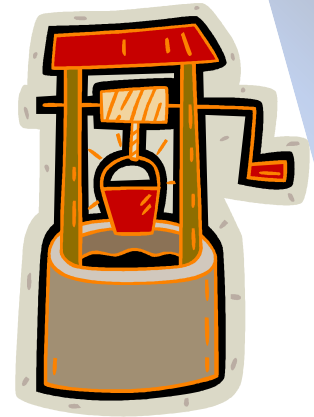


# All's Well That Ends Well

My pet snail Fred is at the bottom of a well that is 12 meters deep.

He crawls up 3 meters a day, but slips back 2 meters each night.

How long will it take him to crawl up and out of the well?



# Pass the Parcel

A class of pupils are sitting in a circle playing pass the parcel.

They are evenly spaced, and the 3<sup>rd</sup> pupil is directly opposite the 17<sup>th</sup> pupil.

How many pupils are there altogether?



# Fractions

What is twice two thirds of three quarters of 12?



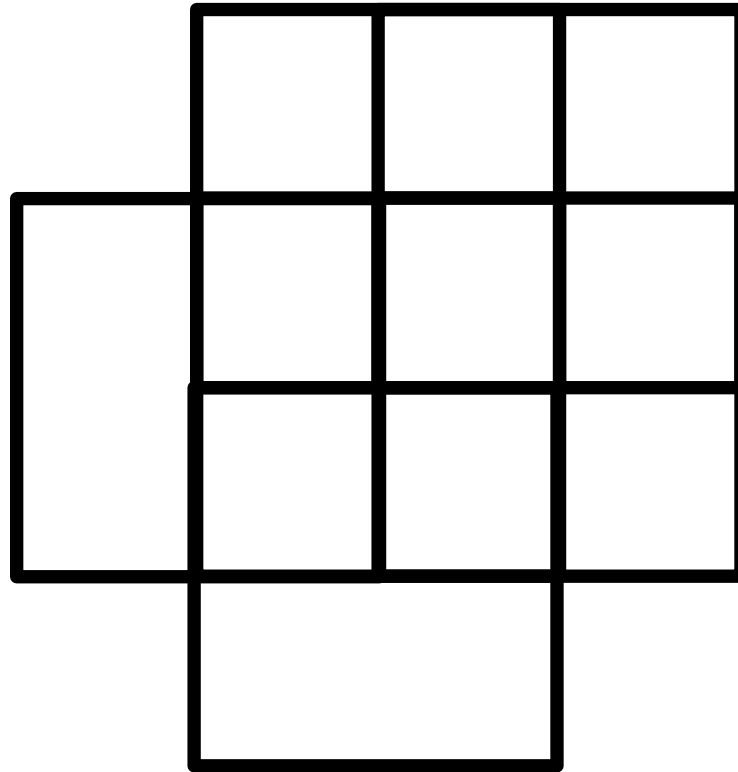
# No One Can Eight Maths

Using eight eights and addition only, can you make 1000?



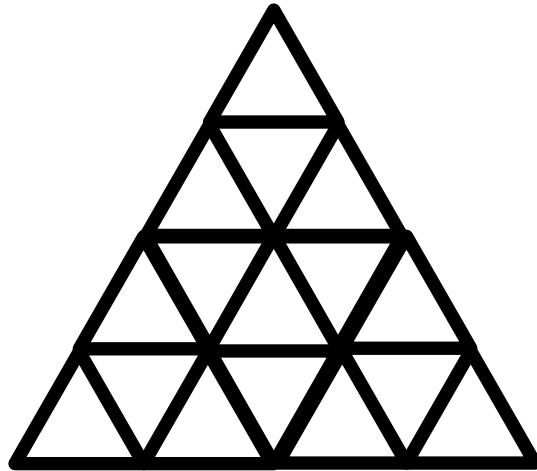
# Squares

How many squares are there in this image?



# Triangles

How many triangles are there in this image?



# Balancing Equations

Correct the following equation so that it makes sense.

$$79 = 24$$

You can move any of the given four digits but you cannot introduce any additional mathematical symbols.

